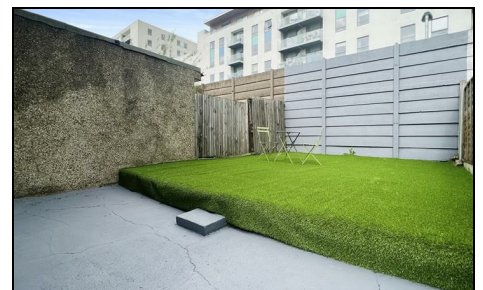


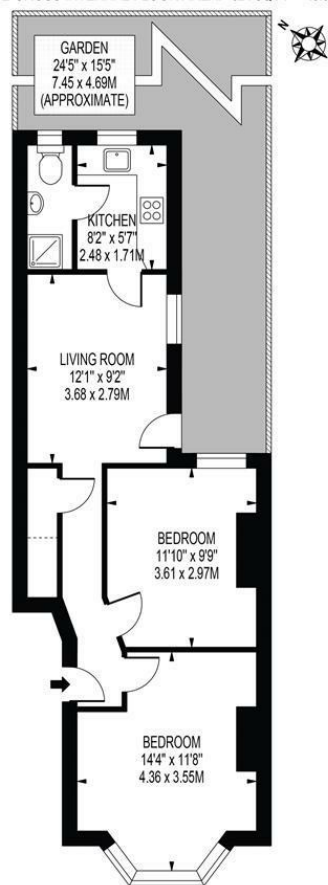
**Ellora Road
Streatham, SW16 6JG**

£1,800 Per Month



****AVAILABLE 10th September 2025**** Ellisons are pleased to be marketing this spacious two double bedroom property with its own private garden, located just a short walk away from Streatham and Streatham Common National Rail Stations, providing excellent access into Central London. The property is positioned close to good local amenities, such as supermarkets and local bus routes and is also nearby to restaurants, cafes and open spaces at Streatham Common. The property itself consists of two good sized bedrooms, lounge, kitchen and shower room. Offered Furnished. Call now to arrange your viewing!

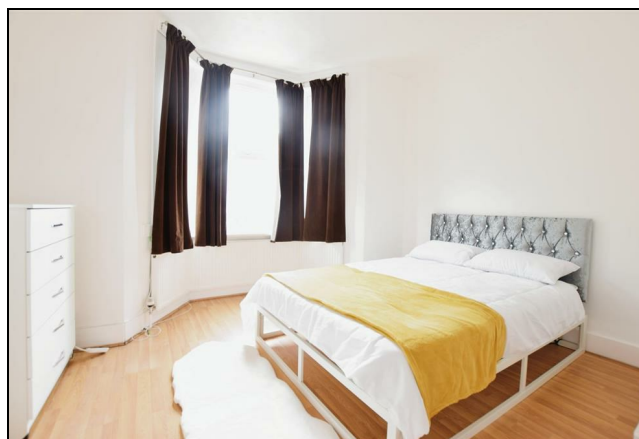
ELLORA ROAD
APPROXIMATE GROSS INTERNAL FLOOR AREA: 524 SQ FT - 48.64 SQ M



GROUND FLOOR
FOR ILLUSTRATION PURPOSES ONLY

THIS FLOOR PLAN SHOULD BE USED AS A GENERAL OUTLINE FOR GUIDANCE ONLY AND DOES NOT CONSTITUTE IN WHOLE OR IN PART AN OFFER OR CONTRACT. ANY INTENDING PURCHASER OR LESSEE SHOULD SATISFY THEMSELVES BY INSPECTION, SEARCHES, ENQUIRIES AND FULL SURVEY AS TO THE CORRECTNESS OF EACH STATEMENT. ANY AREAS, MEASUREMENTS OR DISTANCES QUOTED ARE APPROXIMATE AND SHOULD NOT BE USED TO VALUE A PROPERTY OR BE THE BASIS OF ANY SALE OR LET.

- Two Double Bedrooms
- Private Rear Garden
- Nearby Transport Links
- Available 10th September 2025
- Part Furnished
- First months rent in advance
- Damages deposit = five weeks deposit
- Fee of Intent = one weeks rent
- EPC Rating : D
- Lambeth Council Tax Band : C



Energy Efficiency Rating		
	Current	Potential
Very energy efficient - lower running costs		
(92 plus) A		
(81-91) B		
(69-80) C		
(55-68) D		
(39-54) E		
(21-38) F		
(1-20) G		
Not energy efficient - higher running costs		
England & Wales	67	76
	EU Directive 2002/91/EC	

For Free Mortgage Quote and Best Mortgage Rates, call an Ellisons Mortgage Advisor on 020 8544 0518



Although these particulars are believed to be correct, their accuracy is not guaranteed and they do not form part of any contract.

Celebrating 30 years of successful Sales and Lettings in Merton

